



TYCO TOYS
SPRING 1993

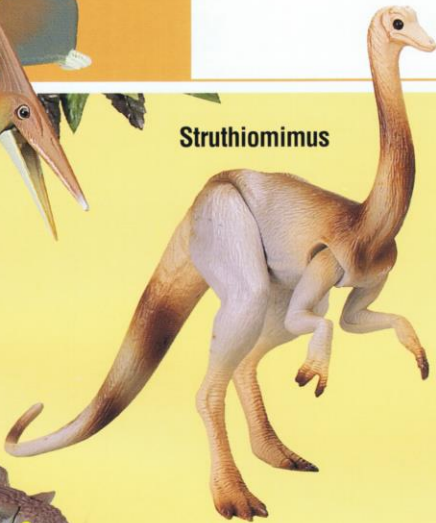
TYCO BOYS ACTION

THE SMITHSONIAN INSTITUTION
NATIONAL MUSEUM OF NATURAL HISTORY
DINOSAUR
AND PREHISTORIC REPTILE
COLLECTION

Fully authorized by the Smithsonian Institution and the National Museum of Natural History.



Pteranodon



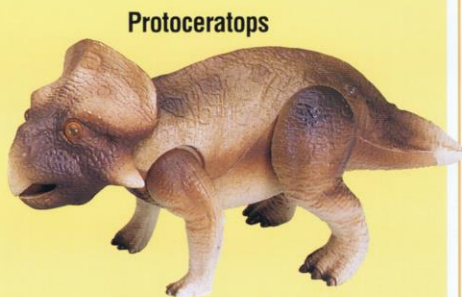
Struthiomimus



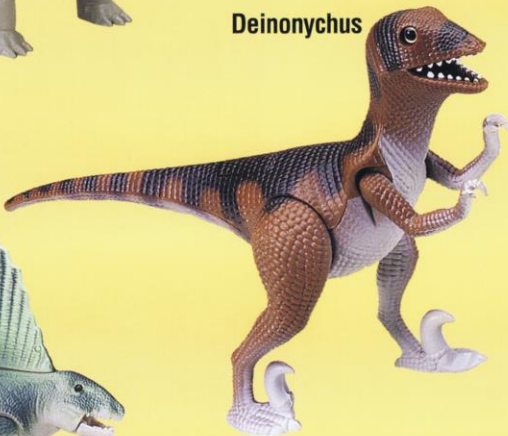
Quetzalcoatlus



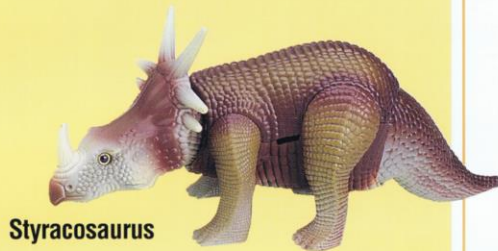
Euoplocephalus



Protoceratops



Deinonychus



Styracosaurus



Dimetrodon



Monoclonius



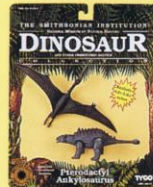
Sabertoothed Cat

Smithsonian Dinosaur Assortment I
Assortment No. 9119

New



Smithsonian Assortment I contains 10 realistic dinosaurs — *Quetzalcoatlus*, *Euoplocephalus*, *Struthiomimus*, *Protoceratops*, *Sabertoothed Cat*, *Dimetrodon*, *Deinonychus*, *Pteranodon*, *Monoclonius*, and *Styracosaurus*. Equipped with moveable heads, arms, legs, tails or wings, these prehistoric beasts can assume a variety of lifelike poses. Six single pack cards featuring 1 dinosaur and 2 value pack cards featuring 2 smaller dinosaurs.



Standard Pack: 24 (3 of each)
Carton Weight: 8 lbs.
Cube: 2.2 • **Package Size:** 9" x 11" x 3"

Presenting an expanded collection for 1993 of some of the most life-like dinosaur replicas you've seen in 65 million years — authenticated by the Smithsonian Institution's National Museum of Natural History. From all the dinosaurs who once roamed the Earth, Tyco has chosen the all-time favorites, and a new line that includes

Ice Age Mammals. They are faithfully reproduced scale models authenticated in 1/24 size, except for two at different scales. Each prehistoric reptile and Ice Age Mammal is articulated so it can be posed in many realistic positions.

Triceratops

Authentically reproduced from beak to tail, *Triceratops* has been brought back to life with three-horned face and bony frill over its neck. It also has moveable, poseable legs.



Smithsonian Dinosaur Assortment No. III, Including Ice Age Mammals

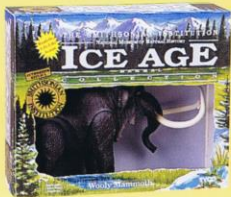
No. 9144

Smithsonian Assortment is packed 12 to a master carton. Assortment consist of 3 each Woolly Mammoth, *Stegosaurus*, *Triceratops* and *Kentrosaurus*.

Standard Pack: 12 (3 of each)

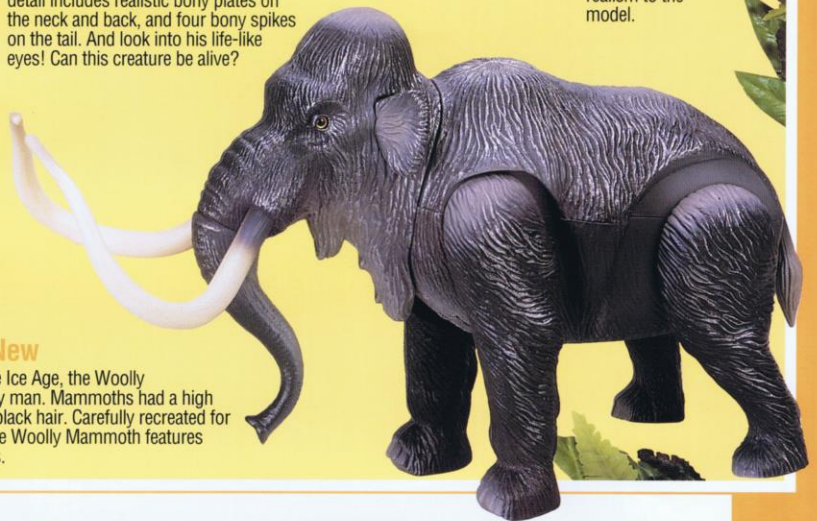
Carton Weight: 15 lbs. • Cube: 4.5

Package Size: 10 3/4" x 4 1/2" x 13"



Woolly Mammoth **New**

One of the last survivors of the Ice Age, the Woolly Mammoth was hunted by early man. Mammoths had a high domed head and long, dense black hair. Carefully recreated for this Smithsonian collection, the Woolly Mammoth features moveable head, trunk and legs.



Stegosaurus

Stegosaurus, a plant-eating dinosaur with moveable legs. Special attention to detail includes realistic bony plates on the neck and back, and four bony spikes on the tail. And look into his life-like eyes! Can this creature be alive?



Kentrosaurus

Kentrosaurus walks the Earth again with long spines on its shoulders, and tail. Moveable legs add realism to the model.

Apatosaurus

No. 9147

New

Apatosaurus, who weighed 30 tons and measured 80 feet from head to tail when he shook the earth 140 million years ago, was one of the largest land creatures ever known. His heavy, flexible tail could deliver a crushing blow to an attacker. Now *Apatosaurus* returns to join the Smithsonian Institution Dinosaur Collection. Moveable legs and neck allow realistic posing.

Standard Pack: 4

Carton Weight: 6 lbs.

Cube: 3

Package Size: 10 1/8" x 6 1/2" x 20"



TYCO BOYS ACTION

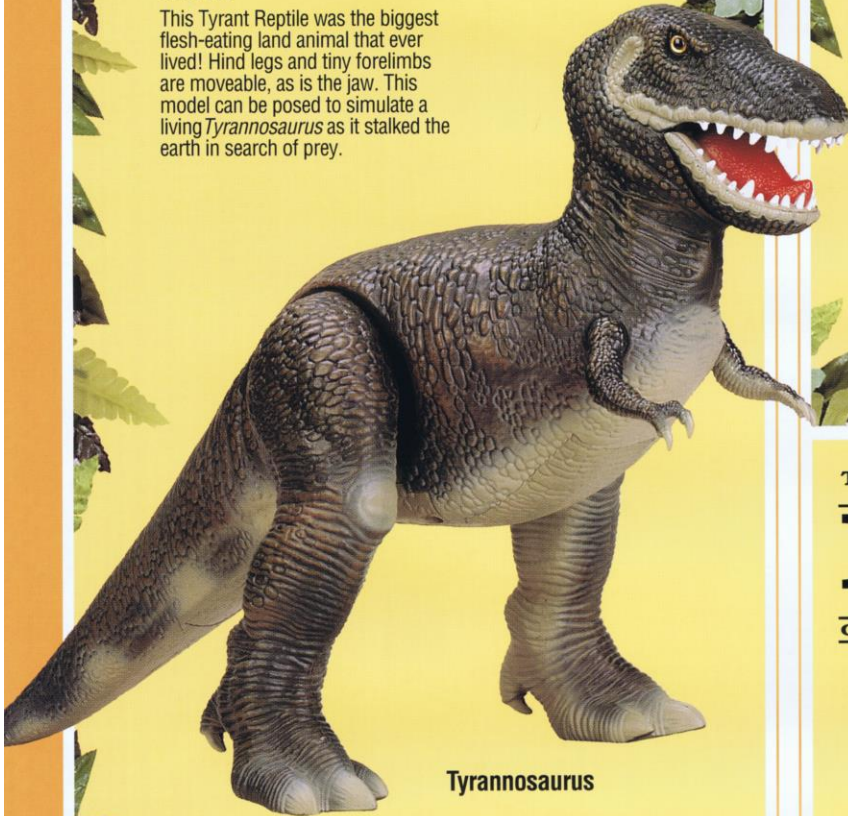
THE SMITHSONIAN INSTITUTION
NATIONAL MUSEUM OF NATURAL HISTORY
DINOSAUR
AND PREHISTORIC REPTILE
COLLECTION

Fully authorized by the Smithsonian Institution
and the National Museum of Natural History

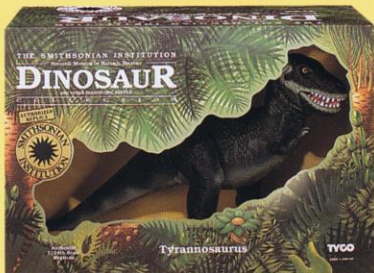
Tyrannosaurus

No. 9149

This Tyrant Reptile was the biggest flesh-eating land animal that ever lived! Hind legs and tiny forelimbs are moveable, as is the jaw. This model can be posed to simulate a living *Tyrannosaurus* as it stalked the earth in search of prey.



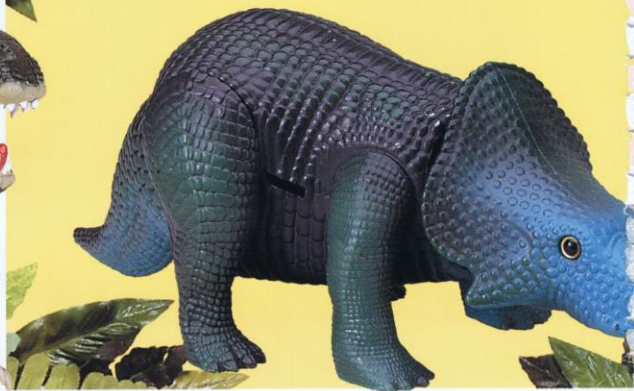
Tyrannosaurus



Standard Pack: 2
Carton Weight: 8 lbs. • Cube: 3
Package Size: 13" x 10" x 19½"

Pterodactylus and Deinonychus

Pterodactylus, one of the earliest short-tailed flying reptiles, has flapping wings and moveable, elongated jaws. Swift-moving *Deinonychus* with huge slashing claws on kicking-action legs.



THE SMITHSONIAN INSTITUTION
NATIONAL MUSEUM OF NATURAL HISTORY
ICE AGE
MAMMAL
COLLECTION

**Sabertoothed Cat and
Giant Ground Sloth**

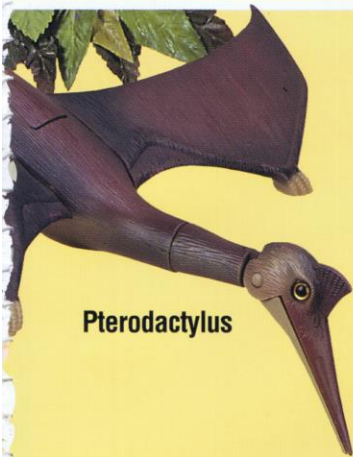
New

These two Ice Age Mammals once roamed the Americas. Named for his sword-like teeth, the 600-pound Sabertoothed Cat was very heavily built. The 20-foot Giant Ground Sloth walked on its knuckles and reared on its strong tail to devour foliage from trees. Both mammals now return with moveable head and legs.

New

Sabertoothed Cat





Pterodactylus

Pteranodon and Monoclonius

Awesome *Pteranodon* with wings that flap and toothless jaws that move. One-horned *Monoclonius*, realistic from horn to hooves, with moveable head, legs and tail.



Pteranodon



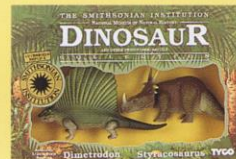
Monoclonius

Dimetrodon

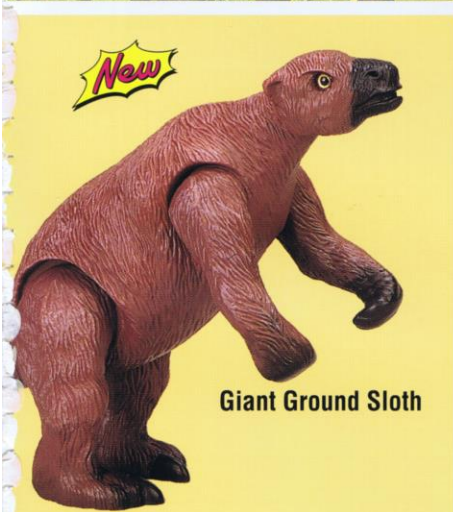
Smithsonian Dinosaur Assortment II, Including Ice Age Mammals

No. 9128

Smithsonian Assortment, including Ice Age Mammals, is packed 12 to a master carton. Assortment consists of 3 each of Sabertooth Cat and Giant Ground Sloth, *Styracosaurus* and *Dimetrodon*, *Pteranodon* and *Monoclonius*, *Pterodactylus* and *Deinonychus*.



Standard Pack: 12 (3 of each pair)
Carton Weight: 10 lbs. • Cube: 2.5
Package Size: 8 3/4" x 3" x 13"



Giant Ground Sloth



Deinonychus

Styracosaurus and Dimetrodon

Six-spiked *Styracosaurus* with moveable head, legs and tail. Sail-backed *Dimetrodon*, a mammal-like reptile, with large, slashing teeth and snapping-action jaw.



No. 9128
Standard Pack: 12 (3 of each pair)
Carton Weight: 10 lbs. • Cube: 2.5
Package Size: 8 3/4" x 3" x 13"



Styracosaurus